

French national management plans in the Mediterranean

Benoit Archambault

**Direction des Pêches Maritimes
et de l'Aquaculture – MEDDE**

10 march 2014 – MEDAC focus group on GSA 7



Crédit photo :© Laurent Mignaux/METL-MEDDE

Ministère de l'Écologie, du Développement durable et de l'Énergie

72 trawlers (pelagic / demersal)

98 gillnetters

Nat. Manag. plan



assessment



assessment



assessment

1600 t

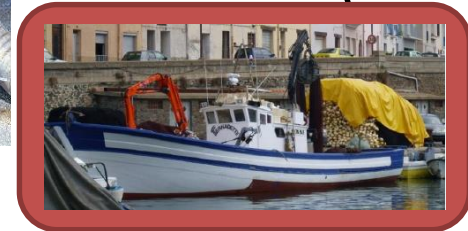
450 t

assessment

740 t



Nat. Manag. plan



!!\ 2012 catch data

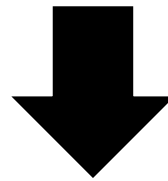
Purse seiners and other small meters

Snapshot of french fleets

Genesis



Council Regulation (EC) No. 1967/2006 concerning management measures for the sustainable exploitation of fishery resources in the Mediterranean Sea



1) Management plan for trawlers



2) Management plan for small métiers, including purse seine



Management plan for small metiers : « gangui », dredges, purse seine and beach seine

- **Plurispecific** and small scale fisheries : numerous target species with **no assessment** except for small pelagics
- **Lack of data** (biological, catch series)
- **Fishing authorization** scheme with a maximum number of vessels allowed
- Objectives set as **minimum catches per unit of effort** (CPUE) except for small pelagics caught by purse seiners : sustainable exploitation rate
- **Technical measures** : gears characteristics, closed areas, closed periods
- **Additional measures** if target CPUE are not reached



Arrêté du 13 mai 2014 portant adoption de plans de gestion pour les activités de pêche professionnelle à la senne tournante coulissante, à la drague, à la senne de plage et au gangui en mer Méditerranée par les navires battant pavillon français

Management plan for trawlers



Scope of the plan

- Plan for both **pelagic** and **demersal** trawlers

OBJECTIVES

- Maximum adult exploitation rate for **anchovy and sardine** - set at **40% of the adult biomass**

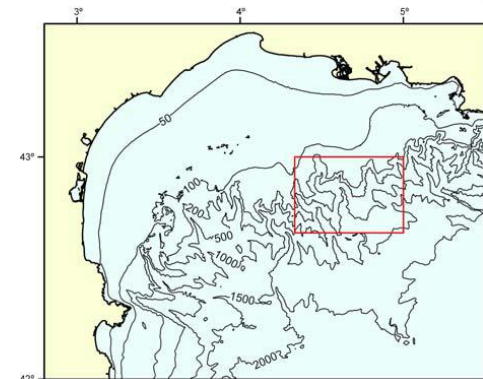


- MSY between 2015 and 2020 for **Hake**

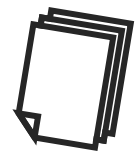


Management measures

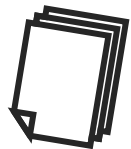
- **Baseline of existing EU and national legislation :**
 - Fishing authorizations
 - Maximum engine power
 - Fishing ban on weekend and bank holidays
 - Night fishing ban
 - Trawling forbidden within the 3 nautical miles zone
 - Minimum 40 mm end square mesh size
- **30 % reduction** of the number of vessels : from 101 to 72 between 2010 and 2013
- **Ceiling on global fishing effort** : 14726 days/year (approximate average of 200/vessel) managed through a quota of fishing effort → No distinction between pelagic and demersal fishing effort
- In addition to the NMP :
 - **Temporary cessations of fishing activities** by a fraction of a fleet in 2011, 2012 and 2013
 - Freezing of fishing effort in the **GFCM Fishing Restricted Area** → 39 % effort reduction



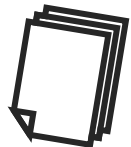
Official texts



Arrêté du 28 décembre 2012 créant le régime d'autorisation pour le « box CGPM » → ***Authorization scheme for access to the GFCM FRA***



Arrêté du 28 janvier 2013 créant le régime d'effort de pêche pour les chalutiers → ***Fishing effort scheme for trawlers***



Arrêté du 28 février 2013 portant plan de gestion pour le chalut en Méditerranée → ***Management plan for trawlers***



On the shelf:
French and
Spanish trawl



On the slope:
French gillnet and
Spanish longline

