

# CCR MED – RAC MED

## Socio-Economic Impact Assessment of CFP reform

FAO SCIENTIFIC ADVISORY COMMITTEE (SAC)  
Sub-Committee on Economics and Social Sciences  
13th session, Rome 18th February 2013



# What is RAC MED?

- The Regional Advisory Council for the Mediterranean (RAC MED) is a stakeholders led organization and its role is to enable the European Commission to benefit from the knowledge and experience of stakeholders in the formulation and implementation of fisheries management measures.
- The RAC MED is composed by representatives from the fishing sector of its seven Member States (Italy, France, Spain, Slovenia, Greece, Malta and Cyprus) and by other parties concerned with the Common Fisheries Policy



# Aim of the analysis

To assess the socio economic impact of CFP reform in all the member countries within the EFF timeframe.

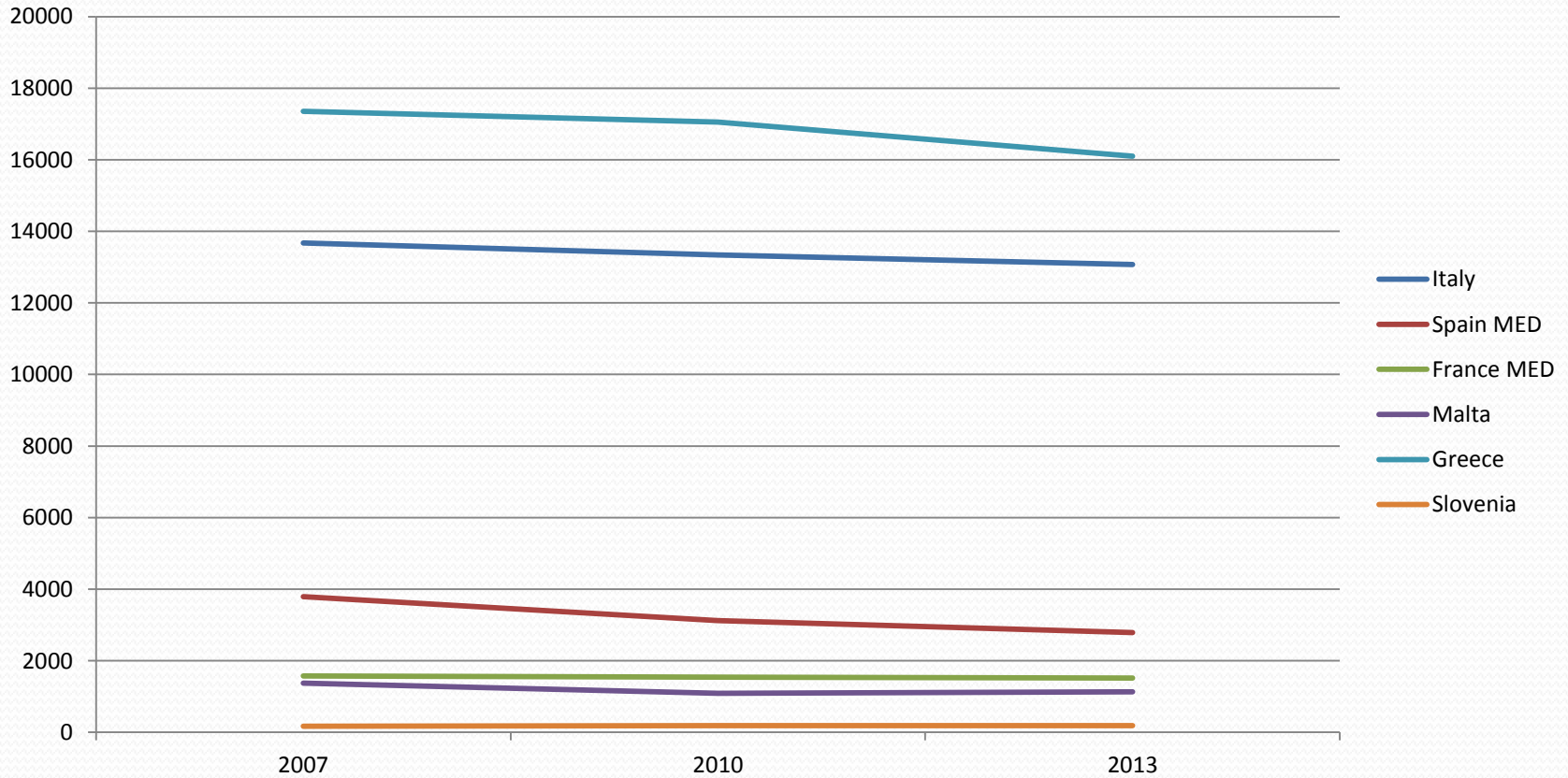


# Methodology used

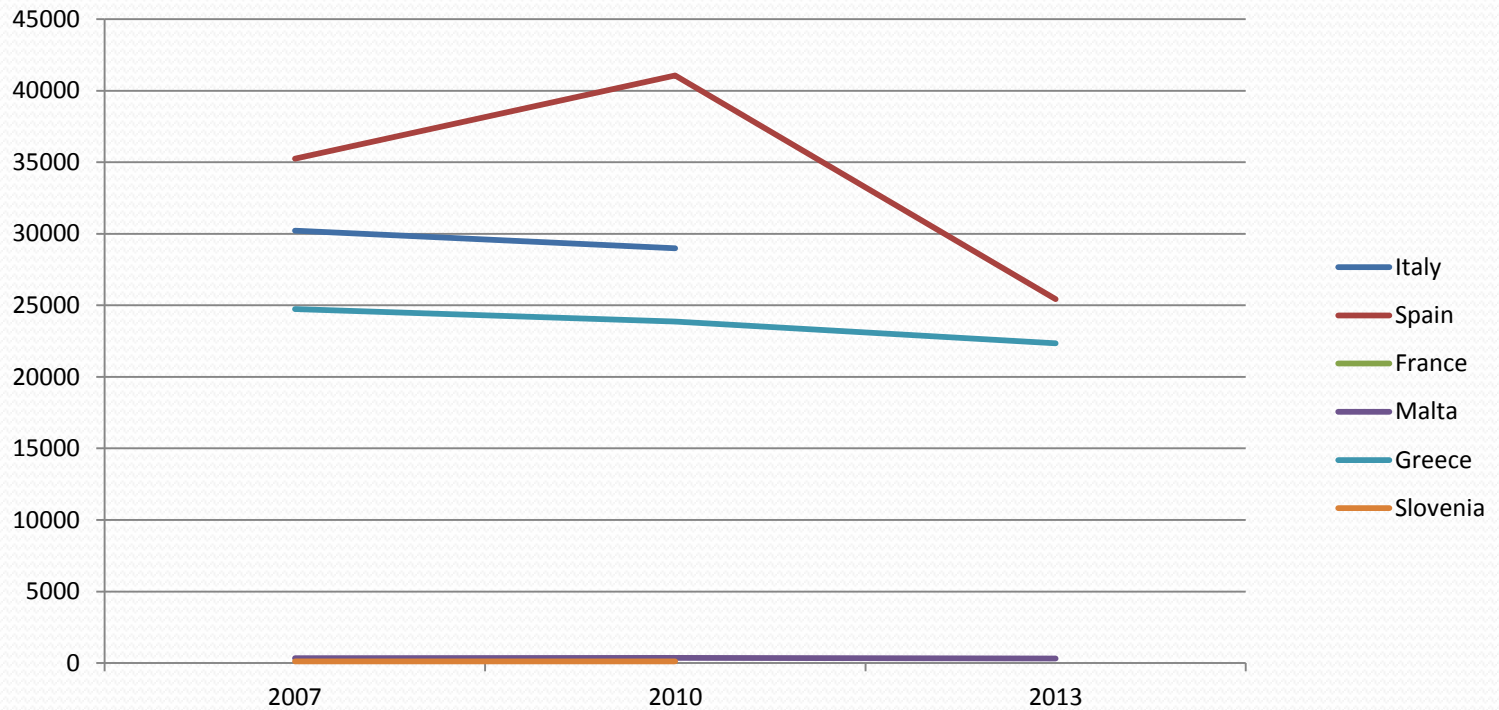
- A questionnaire was distributed among the members using indicators such as:
  - fleet composition,
  - level of employment,
  - level of production costs,
  - cost of fuels,
  - safety nets;
- Three reference years were taken: 2007, 2010, projection 2013



# Graph 1: Number of registered vessels

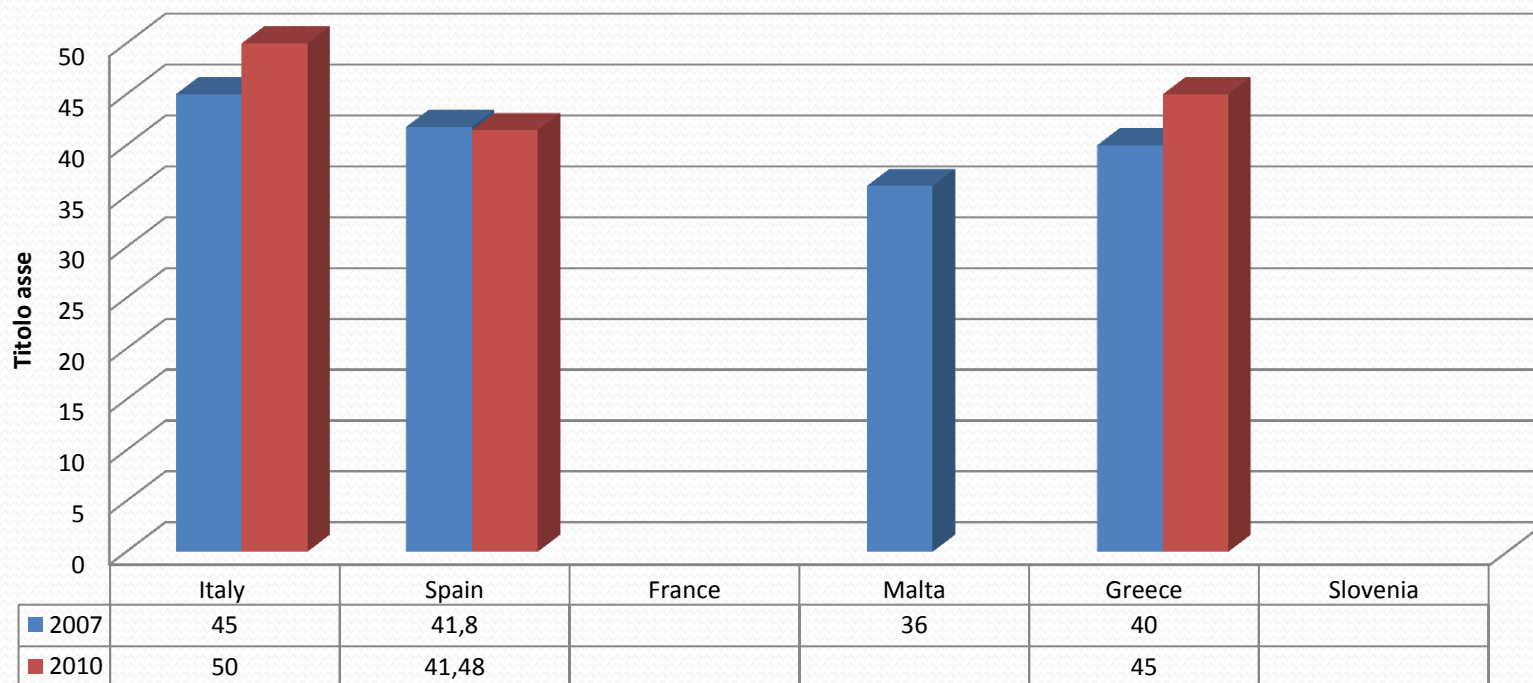


# Graph 2: Number of employees in the fishery sector

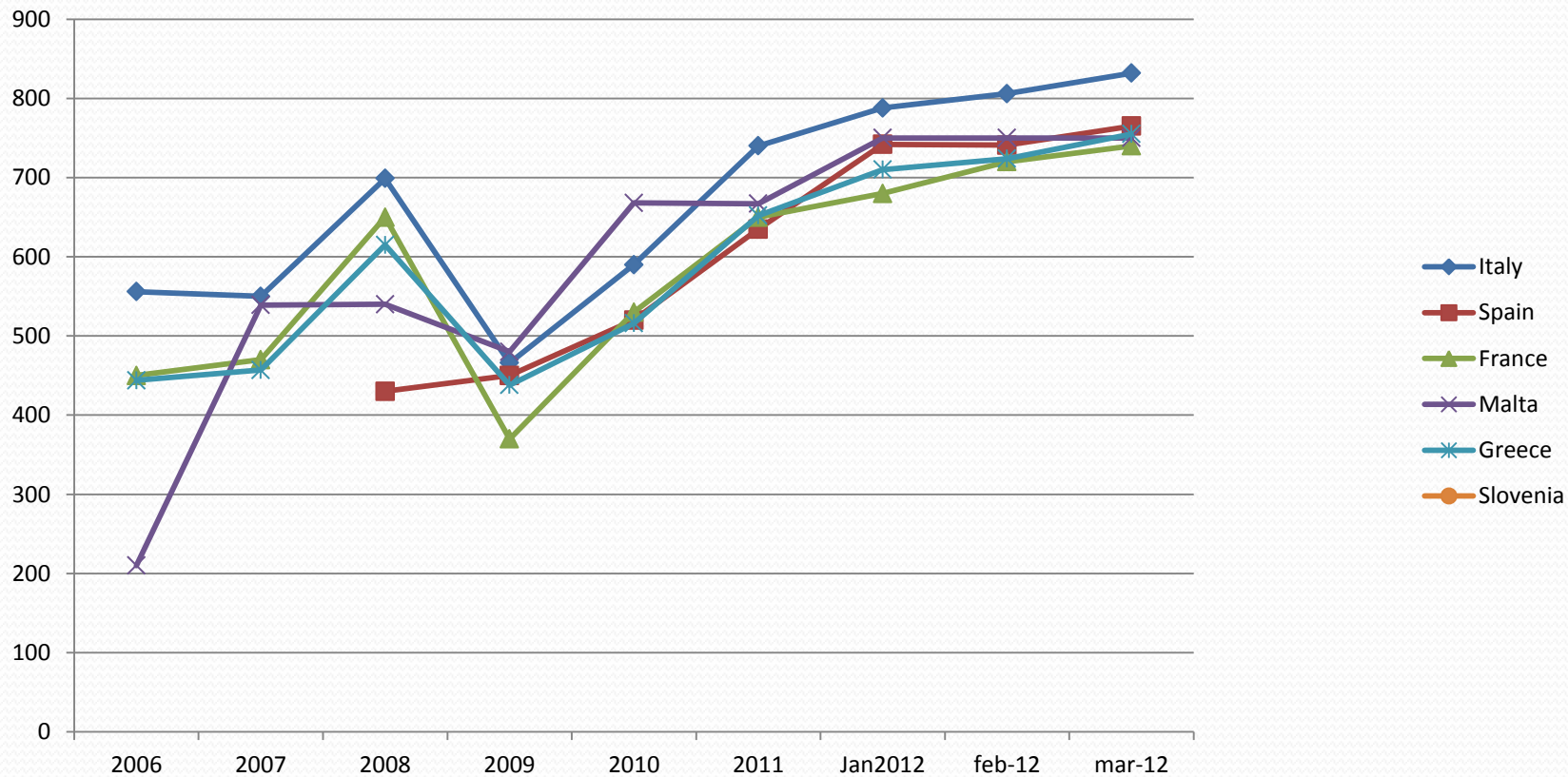


# Table 1: The average age of the employees in the fishery sector (2007-2010)

Age of employees



# Graph 3: Fuel cost(€/1000lt)





THANKS FOR YOUR ATTENTION!

